

```

Current Data Parameters
NAME      JT-AKTIN-FUCOSTEROL-H1-CDCl3-20150820
EXPNO     10
PROCNO    1

F2 - Acquisition Parameters
Date_     20150821
Time      0.47
INSTRUM   spect
PROBHD    5 mm PABBO BB/
PULPROG   zg30
TD         65536
SOLVENT   CDCl3
NS         16
DS         2
SWH        8223.685 Hz
FIDRES     0.125483 Hz
AQ         3.9846387 sec
RG         129.89
DW         60.800 usec
DE         8.00 usec
TE         295.7 K
D1         1.00000000 sec
TD0        1

===== CHANNEL f1 =====
NUC1       1H
P1         12.33 usec
PLW1       15.84899998 W
SF01       400.1632013 MHz

F2 - Processing parameters
SI         65536
SF         400.1600072 MHz
WDW        EM
SSB        0
LB         0.30 Hz
GB         0
PC         1.00
  
```

2.291
2.287
2.279
2.273
2.233
2.214
2.197
2.175
2.056
2.032
2.024
2.010
2.001
1.994
1.885
1.876
1.868
1.860
1.854
1.836
1.824
1.815
1.596
1.581
1.564
1.545
1.535
1.517
1.502
1.482
1.471
1.465
1.450
1.439
1.427
1.410
1.396
1.387
1.381
1.370
1.261
1.168
1.161
1.156
1.137
1.127
1.115
1.102
1.085
1.073
1.056
1.051
1.044
1.037
1.029
1.011
0.998
0.989
0.986
0.981
0.972
0.969
0.956
0.940
0.925
0.688

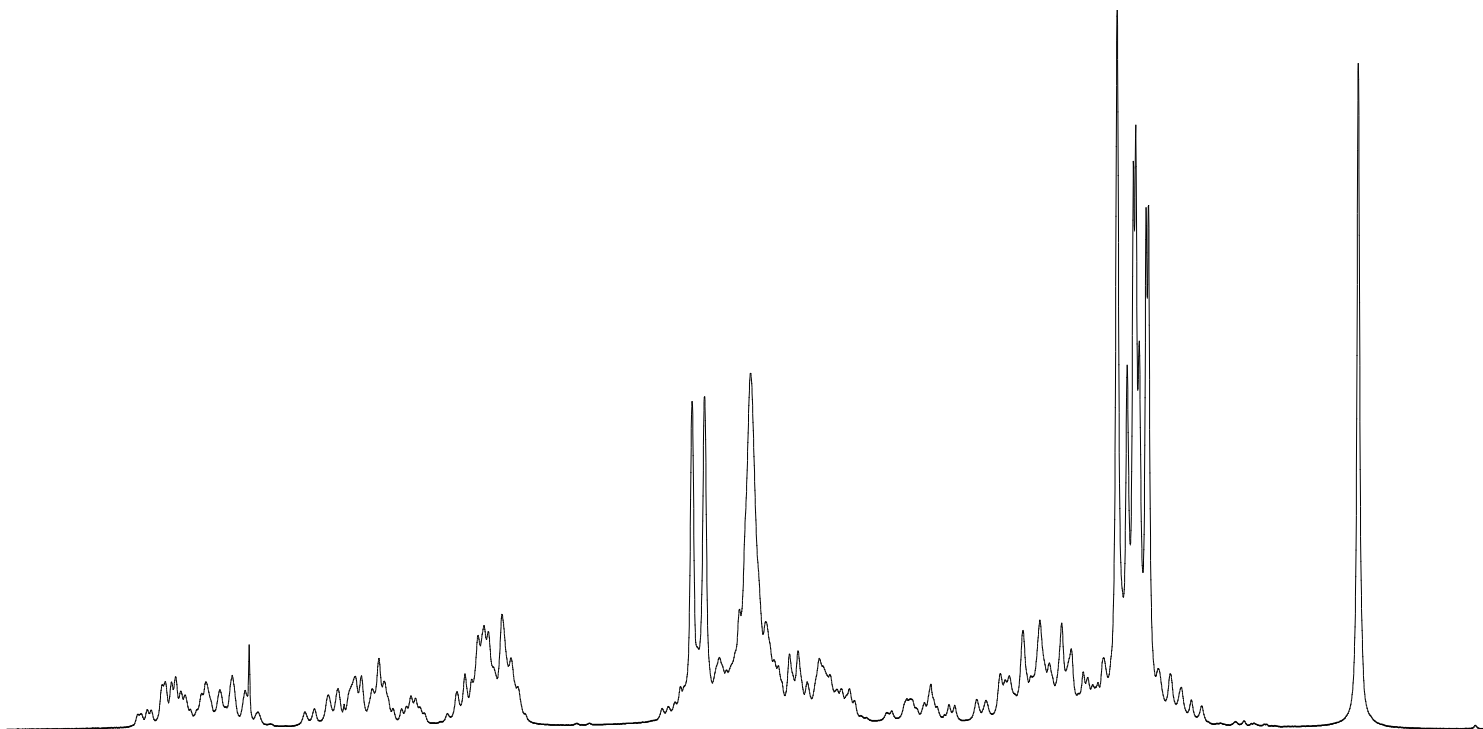


Current Data Parameters
 NAME JT-AKTIN-FUCOSTEROL-H1-CDC13-20150820
 EXPNO 10
 PROCNO 1

F2 - Acquisition Parameters
 Date_ 20150821
 Time 0.47
 INSTRUM spect
 PROBHD 5 mm PABBO BB/
 FULPROG zg30
 TD 65536
 SOLVENT CDC13
 NS 16
 DS 2
 SWH 8223.685 Hz
 FIDRES 0.125483 Hz
 AQ 3.9846387 sec
 RG 129.89
 DW 60.800 usec
 DE 8.00 usec
 TE 295.7 K
 D1 1.00000000 sec
 TDO 1

===== CHANNEL f1 =====
 NUC1 1H
 P1 12.33 usec
 PLW1 15.84899998 W
 SF01 400.1632013 MHz

F2 - Processing parameters
 SI 65536
 SF 400.1600072 MHz
 WDW EM
 SSB 0
 LB 0.30 Hz
 GB 0
 PC 1.00



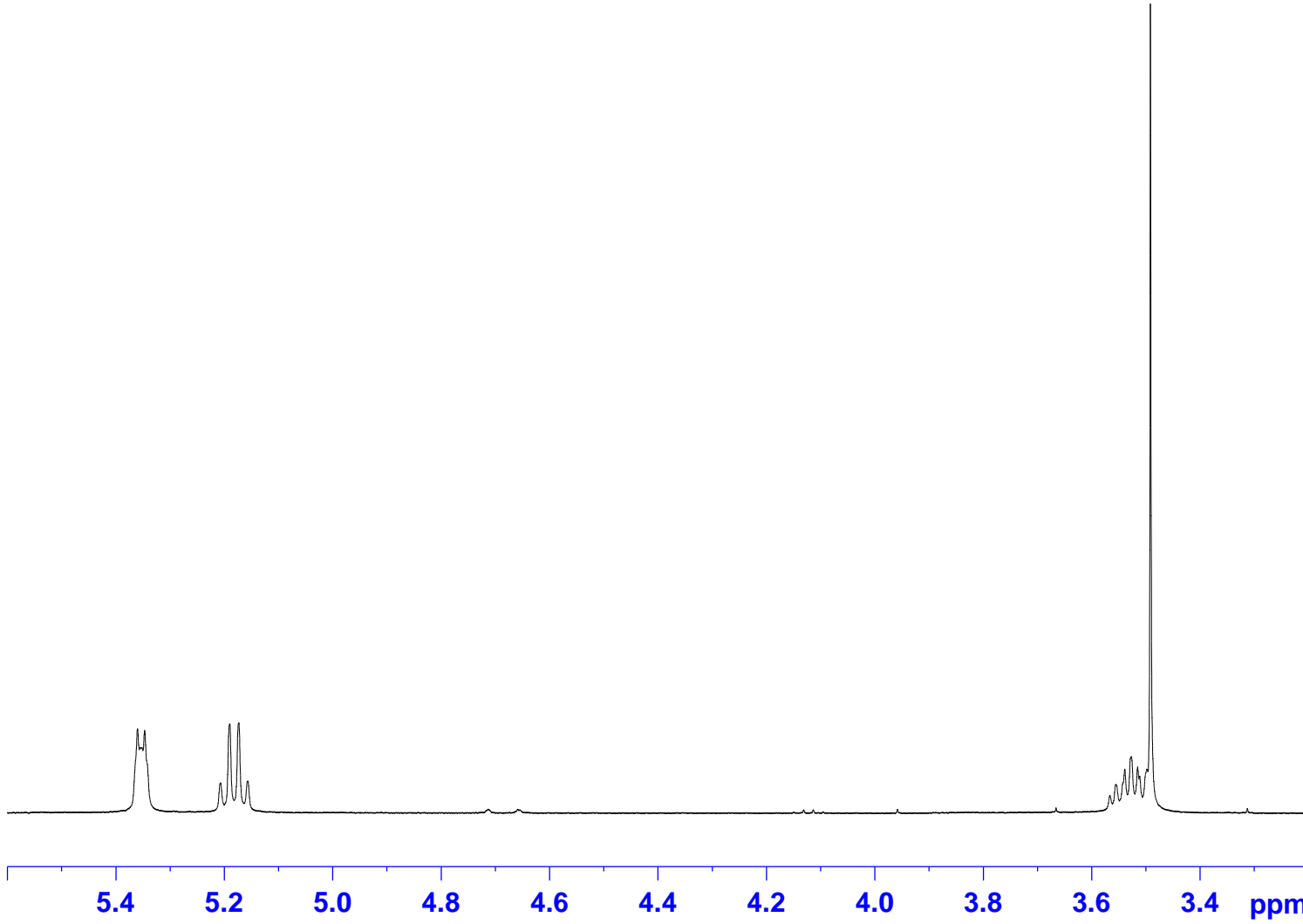
2.4 2.3 2.2 2.1 2.0 1.9 1.8 1.7 1.6 1.5 1.4 1.3 1.2 1.1 1.0 0.9 0.8 0.7 ppm

3.2764
3.2569
4.2991
15.2668
21.4724
3.0174

5.360
5.355
5.352
5.347

5.190
5.173
5.156

3.539
3.527
3.515
3.511
3.498
3.491



```
Current Data Parameters
NAME      JT-AKTIN-FUCOSTEROL-H1-CDC13-20150820
EXPNO     10
PROCNO    1

F2 - Acquisition Parameters
Date_     20150821
Time      0.47
INSTRUM   spect
PROBHD    5 mm PABBO BB/
PULPROG   zg30
TD         65536
SOLVENT   CDC13
NS         16
DS         2
SWH        8223.685 Hz
FIDRES     0.125483 Hz
AQ         3.9846387 sec
RG         129.89
DW         60.800 usec
DE         8.00 usec
TE         295.7 K
D1         1.00000000 sec
TD0        1

===== CHANNEL f1 =====
NUC1      1H
P1         12.33 usec
PLW1      15.84899998 W
SF01      400.1632013 MHz

F2 - Processing parameters
SI         65536
SF         400.1600072 MHz
WDW        EM
SSB        0
LB         0.30 Hz
GB         0
PC         1.00
```