

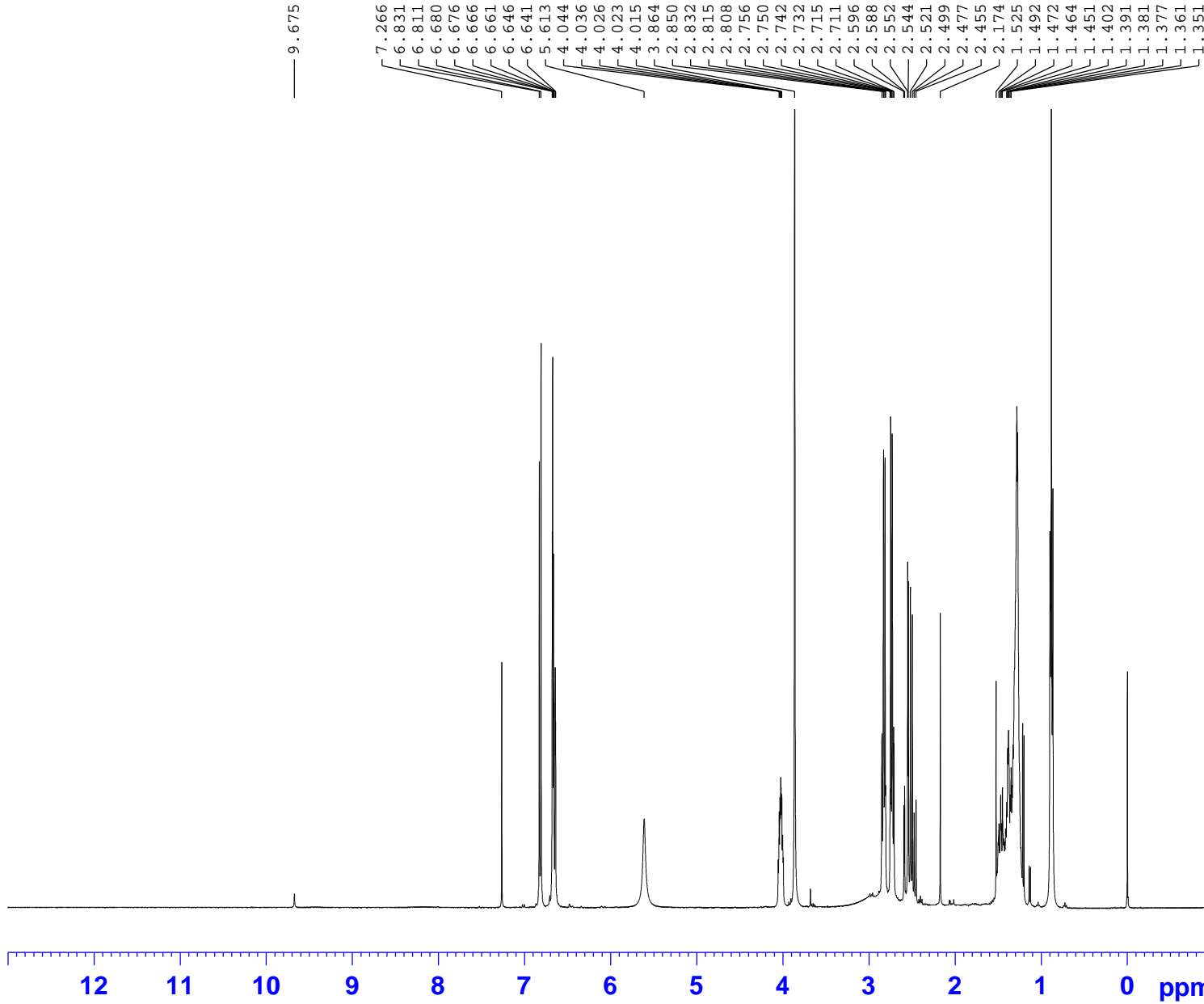


Current Data Parameters
NAME JT-AKTIN-6-GINGEROL-H1-CDCL3-20161209
EXPNO 20
PROCNO 1

F2 - Acquisition Parameters
Date_ 20161209
Time 19.50
INSTRUM spect
PROBHD 5 mm PABBO BB/
FULPROG zg30
TD 65536
SOLVENT CDCL3
NS 16
DS 2
SWH 8223.685 Hz
FIDRES 0.125483 Hz
AQ 3.9846387 sec
RG 63.95
DW 60.800 usec
DE 8.00 usec
TE 294.3 K
D1 1.00000000 sec
TDO 1

===== CHANNEL f1 =====
NUC1 1H
P1 12.80 usec
PLW1 15.84899998 W
SF01 400.1632013 MHz

F2 - Processing parameters
SI 65536
SF 400.1600059 MHz
WDW EM
SSB 0
LB 0.30 Hz
GB 0
PC 1.00



9.675
7.266
6.831
6.811
6.680
6.676
6.666
6.661
6.646
6.641
5.613
4.044
4.036
4.026
4.023
4.015
3.864
2.850
2.832
2.815
2.808
2.756
2.750
2.742
2.732
2.715
2.711
2.596
2.588
2.552
2.544
2.521
2.499
2.477
2.455
2.174
1.525
1.492
1.472
1.464
1.451
1.402
1.391
1.381
1.377
1.361
1.351

1.0000
1.9963
0.8804
1.0778
3.0936
2.1214
2.1238
2.1688
0.2301
9.0258
3.0969